

Troy 8

131031
No. 429

Obverse

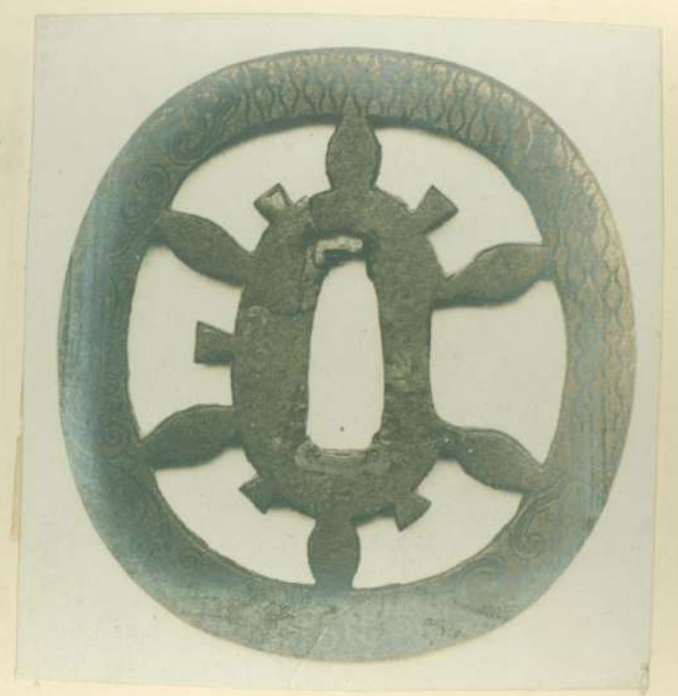


Tsuba *Za Tashi*
Metal *Drou*

School or Style

Maker's Name *Mukuro*

Reverse



Date *16th Century*

Subject of Decoration

Obverse:— *"The shell of the Law" design mixed
Reverse:— *Rein inscribed in wire of brass. in cloud
forms flowers and waves.**

Note:—