

ENT
254173

CHICAGO NATURAL HISTORY MUSEUM—ETHNOLOGY *54B-11/01*

Field No.

MY 5

Provenience: CHINA , Peking

People or Culture: Chinese Period: Late Ch'ing or

Object: Beard comb and associated lucky ^{early modern} pieces

Material: Brass, bamboo

Description: Brass and bamboo comb, coin (wu-chu),
2 coin charms and circular jade piece, ivory or
bone ring with characters and flowers, and open-
work ivory or bone bead slide.

Neg. No.

*ALB. P. 353
+ #100157*

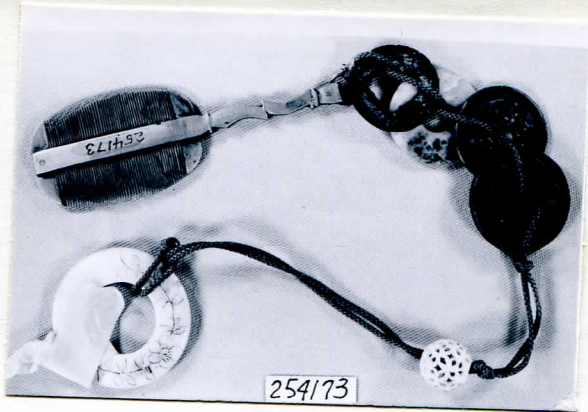
Dimensions:

(in cm.)

length 34.5

Acc. **2786**

Collection: C. F. Bieber Collection of Asian Folk and Minor
Arts, purchased from Miss Caroline Frances Bieber
15 November 1962



254173