

A **ENT**

CHICAGO NATURAL HISTORY MUSEUM—ETHNOLOGY

54B-10/30

253514

A, B, C

Field No.

A 47

Provenience: CHINA, Peking

People or Culture: Chinese

Period: Late Ch'ing

Object: Fan case, with fan

Material: Satin

Description: Satin stitch on cream satin. Motif: eight horses, one with monkey and peach (Journey to the West.) Embroidered edge. Green composition slide. Lined with pinkish cotton. With undecorated bamboo and paper fan.

Neg. No.

ALB. P. 232
+ 335
+ #100153

Dimensions:

(in cm.)

B) closed. width: 3.7 length 26.5

A) max width: 8.5. length: 30.5, ~~31.5~~

Acc. 2786

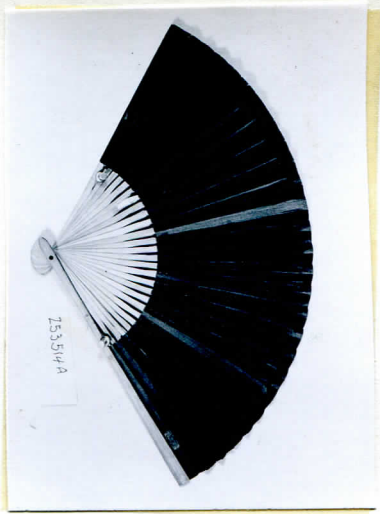
Collection: C. F. Bieber Collection of Asian Folk and Minor Arts, purchased from Miss Caroline Frances Bieber 15 November 1962



253514
R



253514B



253514A