

A **ENT**

54B-10/30

180288

Provenience: CHINA.

Field No.

People or Culture: Chinese

Period: Late Ch'ing

Object: Fan case

Material: silk

NEG-ALB.  
p. 231+344

Description: White silk embroidered in blues, pinks, gold, green and grayish brown. Obverse: scenes of pagoda, temple and boat. Reverse: tree branches, prunus blossoms and butterflies. Bound with green and gilt braid, lined with orange figured silk.

Neg. No.

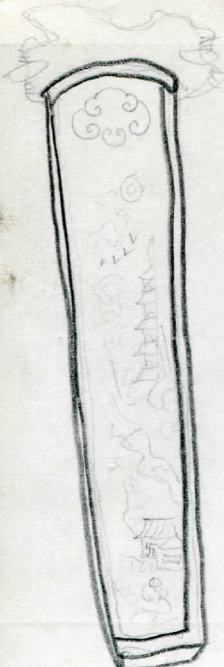
Handle: length of green binding trimmed with 2 pink glass stones.

Dimensions:  
(in cm.)

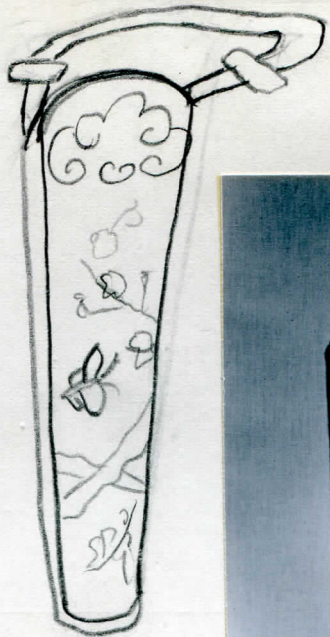
32x6

Collection: Presented by Miss Edna H. Bahr  
14 March 1962.

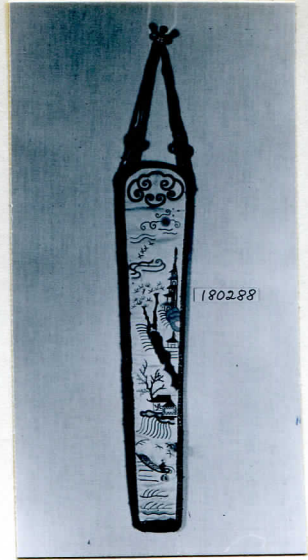
Acc. 2768



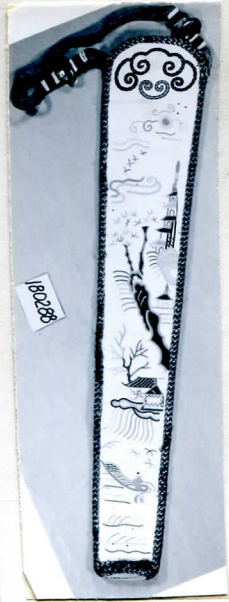
obverse



reverse



180288



180288