

A ENT

CHICAGO NATURAL HISTORY MUSEUM—ETHNOLOGY

548-10/22

253442

Provenience: CHINA

Field No.

People or Culture: Chinese

Period: Late Ch'ing  
or modern

A 91

Object: Belt purse

Material: Silk, satin

**Description:** Figured blue silk (vermiculated)  
Two white satin pockets with surface  
darning. Hexagons containing various  
motifs, including hai character, six-  
pointed star, endless knot, butterfly  
and swastika. Blues, yellow, black,  
purple and gold. Blue/white braid  
edging.

Neg. No. ALB.

P. 210 + 337

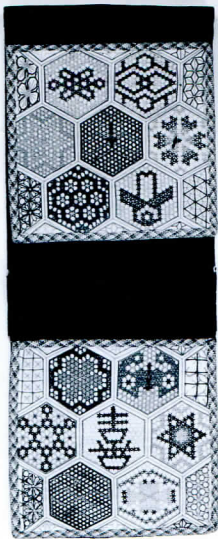
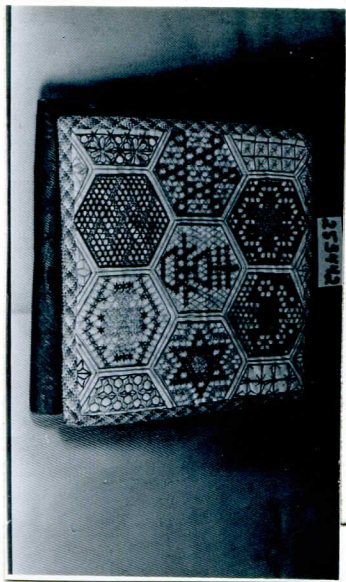
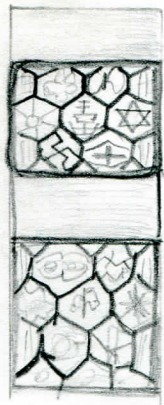
**Dimensions:**

(in cm.)

closed: 8.8 x 21.9

Acc. 2786

**Collection:** C. F. Bieber Collection of Asian Folk and Minor  
Arts, purchased from Miss Caroline Frances Bieber  
15 November 1962



253442