

FIELD MUSEUM OF NATURAL HISTORY.

126032

ENT

Country **China**

Locality ?

People **Chinese**

Name *Stiff circular fan of two layers of gauze, paper between. On front in colors, a landscape, two ^{sages} ~~men~~ standing beneath pines on edge of lake. On back, poem. Lim and handle of black lacquered wood.*

Collection **Capt. Marshall Field Expedition to China, 1923.**

Notes

Damaged in upper left side.

Acc. 1462

Width

Length

Height

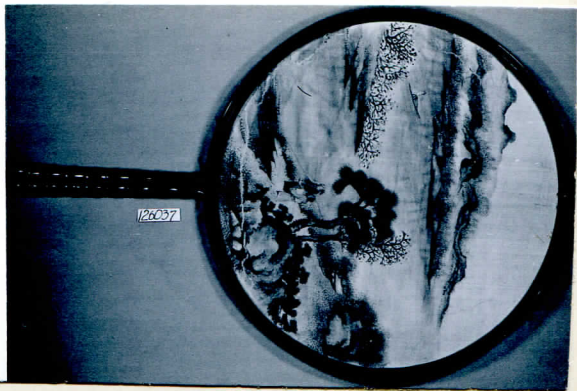
Price

1nd
54B-10/23

Date: Tungchih 1862-1873

NEG. ALB.P. 321

1432



126037