

126011

ENT

Country ChinaLocality PekingPeople Chinese

Name Old, stiff fan of 12 feathers of Tibetan eagle, white with black tips and bases. Handle of gold ivory with etched design of man standing beneath plum pine and bamboo. Semi-circular plaque at top.

Collection Capt. Marshall Field Expedition to China, 1923.

857

Notes purchased in Peking

Acc. 1462

Width

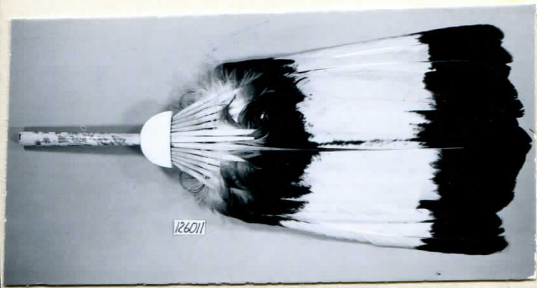
Length

Height

Price

129

54B-10/23



126011