

126009

ENT

Country ChinaLocality HangchowPeople Chinese

Name Stiff fan of 12 quills of eagle  
(of Korea & Manchuria), brown flecked with  
white. Handle of ivory with carving at  
the top with design of two bats with seal  
character "shou" - Longevity. Tassel of cord of  
mulberry shade.

Collection Capt. Marshall Field Expedition to China, 1923.Notes Made  
~~Purchased~~ in Hangchow.

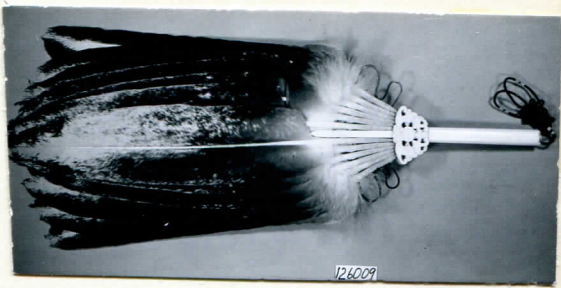
Acc. 1462

Width \_\_\_\_\_ Length \_\_\_\_\_ Height \_\_\_\_\_ Price \_\_\_\_\_

Mid  
54B-10/23

NEG. ALB. P. 348

1500.



126009