

**ENT****254231**

Field No.

VA 9

Neg. No.

ALB-P. 305

Acc. 2786

CHICAGO NATURAL HISTORY MUSEUM—ETHNOLOGY

54B-10/17

Provenience: CHINA

People or Culture: Chinese

Period: Prob. 19th cent.

Object: Rosary

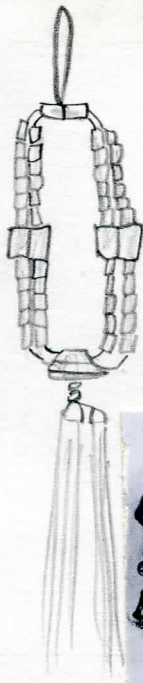
Material: Wood, silk, mother of pearl, glass

**Description:** Double strand of carved, dark brown openwork cylindrical beads. Four quadruple black lacquered beads, inlaid with mother of pearl. Two dark green tassels, and green cord. Two glass beads, one white, and one red, next to tassel.

**Dimensions:**  
(in cm.)

total length: approx. 46.0

**Collection:** C. F. Bieber Collection of Asian Folk and Minor Arts, purchased from Miss Caroline Frances Bieber  
15 November 1962



254231