

ENT
254225

Provenience: CHINA

Field No.

People or Culture: Chinese

Period: Prob. 19th
cent.

VA3

Object: Rosary

Material: Seed

Description: Single strand of flat, oval, dark brown seeds carved with flora and fauna. Chinese characters on opposite side. Irregularly shaped seed at bottom of purple silk tassel with dots and lines incised on it.

Neg. No.

ALB.P. 304

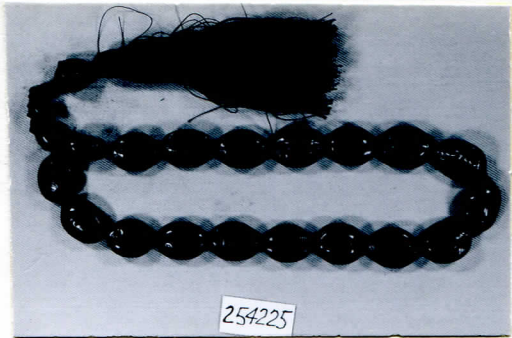
Dimensions:

(in cm.)

total length: approx. 28.0

Acc. 2786

Collection: C. F. Bieber Collection of Asian Folk and Minor Arts, purchased from Miss Caroline Frances Bieber 15 November 1962



254225