

54B-10/21

253469

Provenience: CHINA

Field No.

A154

People or Culture: Chinese. Period: Late Ch'ing

Object: Pouch

Material: Satin

**Description:** Black satin with cloud motif applied on red satin. Chain stitch embroidery on red of flowers and rocks and plants in green, buff, yellow and blue. Blue cotton lining, blue cord; glass slide added by Bieber.

Neg. No.

ALB. P. 351

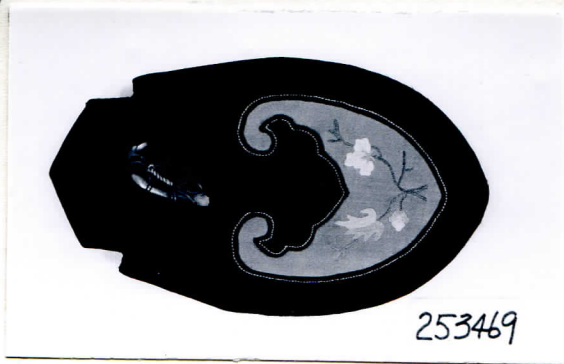
**Dimensions:**

(in cm.)

Max width: 8.1. max height: 14.0

Acc. 2786

**Collection:** C. F. Bieber Collection of Asian Folk and Minor Arts, purchased from Miss Caroline Frances Bieber 15 November 1962



253469