

AGENT  
234843

CHICAGO NATURAL HISTORY MUSEUM—ETHNOLOGY 548-10/13

Provenience: CHINA Ssü-ch'uan, Ch'êng-tu Hsien, Ch'êng-tu. 104.04/30.40

四川 成都

Field No.  
1938:13

People or Culture: Chinese

Object: Belt buckle

Material: Brass

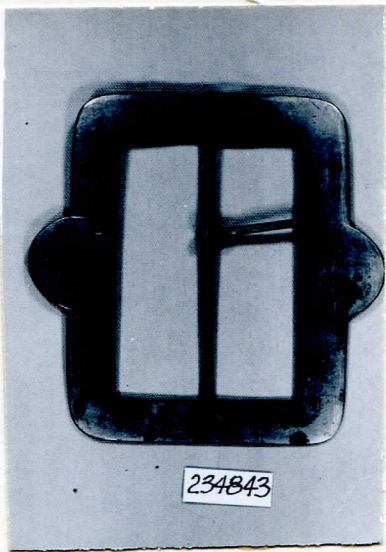
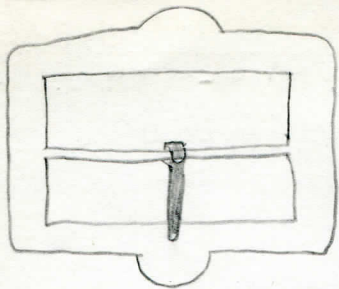
Description: A rectangular buckle with half-moon projection on two sides. Crossbar holds metal (probably iron) tongue. (See sketch on the back).

Neg. No.  
ALB-P. 319

Dimensions:  
(in cm.) 9.2 x 9.1

Acc. 2724

Collection: collected by Dr. Carl Schuster; purchased from Dr. Schuster 7 December 1960



234843