

## FIELD MUSEUM OF NATURAL HISTORY.

126626

a + B.

ENT

Country **China**

54B-10/12 Ind

Locality **PEKING**People **Chinese**Name **Pair of girdle pendants carved from fish bone, colored pink, with openwork designs representing butterfly and plum blossoms.***probably vertebra of a whale (yü ku).*

NEG. ALB. P. 311

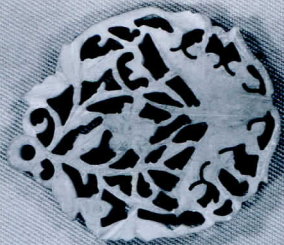
538

Collection **Capt. Marshall Field Expedition to China, 1923.**

Notes

Acc. 1462

Width *4.2 cm* Length *5 cm* Height \_\_\_\_\_ Price \_\_\_\_\_



126626