

## FIELD MUSEUM OF NATURAL HISTORY.

126615

Country China12nd  
54B-10/12Locality PEKINGPeople Chinese

Name Girdle pendant of shaded turquoise carved in undercut and high relief in form of two peaches with a bird. Attached by yellow cord with seed-pearls and carnelian bead.

Collection Capt. Marshall Field Expedition to China, 1923.

Notes

Acc. 1462

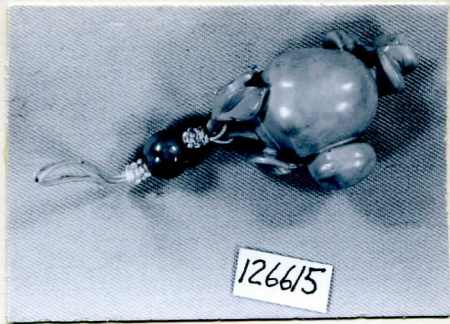
Width 3cm Length 6.5cm Height \_\_\_\_\_ Price \_\_\_\_\_

ENT

C8l

577

NEG. ALB. P. 314



126615