

## FIELD MUSEUM OF NATURAL HISTORY.

Country **China**

54B-10/12

12nd

Locality **PEKING**People **Chinese**

Name **Girdle pendant** of brown clouded amber, carved  
 in form of <sup>medallion</sup> ~~panel~~, ~~fungus-shaped~~, with peony in  
 low relief. Attached by blue cord with seed  
 pearls and jade bead.

Collection **Capt. Marshall Field Expedition to China, 1923.**

Notes

Acc. 1462

Width **4cm** Length **7cm** Height Price

126607

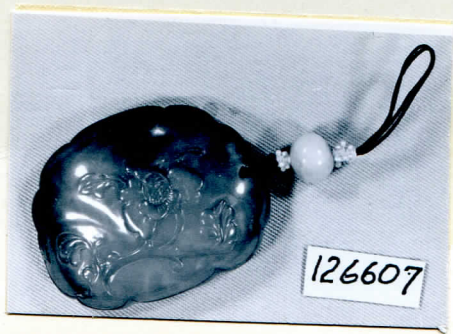
ENT

C8  
l

584

NEG. ALB. P. 306

+ #75745



126607