

## FIELD MUSEUM OF NATURAL HISTORY.

126599

Country **China**

54B-10/12

Ind

Locality **PEKING**People **Chinese**

Name **Girdle ornaments of lapis-lazuli carved in  
form of four peaches with leaves. Attached by  
tan cord with seed pearls and pink quartz beads.**

Collection **Capt. Marshall Field Expedition to China, 1923.**

Notes

Acc. 1462

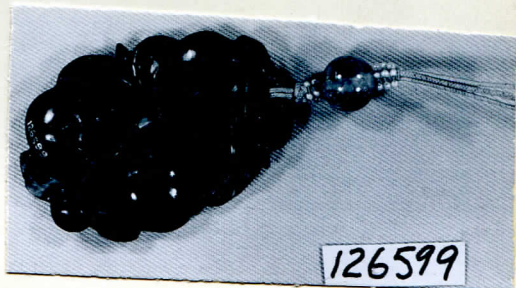
Width **3.3cm** Length **7cm** Height \_\_\_\_\_ Price \_\_\_\_\_

ENT

C89

NEG. ARB. P. 316

589



126599