

ENT
254258

CHICAGO NATURAL HISTORY MUSEUM—ETHNOLOGY

548-10/07

Field No.

MY13

Provenience: CHINA

People or Culture: Chinese

Period: 20th cent.

Object: Pendant

Material: Glass, imitation coral

Description: Clear glass (imitation aquamarine) oval in form of a section of bamboo. Imitation coral bead on blue cord. Red and white knot.

Neg. No.

ALB. P. 316

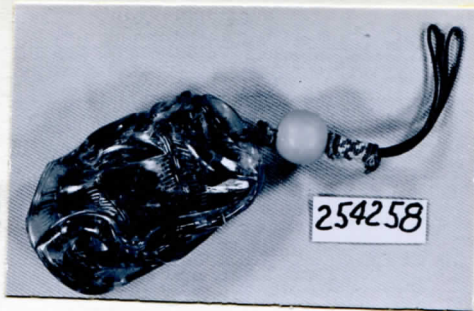
Dimensions:

(in cm.)

max height: 4.9, max width: 3.0

Acc. 2786

Collection: C. F. Bieber Collection of Asian Folk and Minor Arts, purchased from Miss Caroline Frances Bieber 15 November 1962



254258