

AGENT

CHICAGO NATURAL HISTORY MUSEUM—ETHNOLOGY 548-10/06

235596

Provenience: CHINA

Field No.

People or Culture: CHINESE. Modern

Object: Partial Mandarin chain

Material: Wood, glass, cotton strip & string, metal

Description: A chain of wooden beads strung through a cotton string and spaced by four light green glass balls. On one end dangles a cotton strip which holds a tear-drop shaped glass on a gold mount. The strip also strings a transparent piece of amber colored glass. On the other end are several tiny circular metal pieces from which dangles some red wooden beads terminating in a gold mounted tear drop-shaped glass.

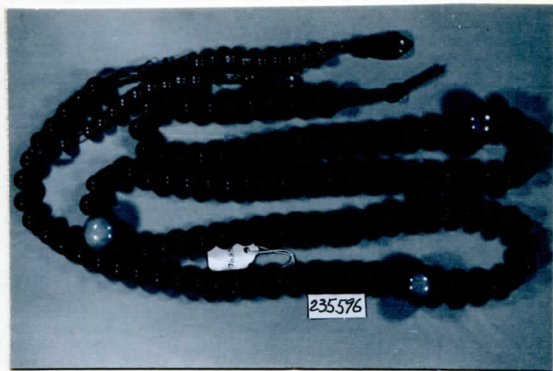
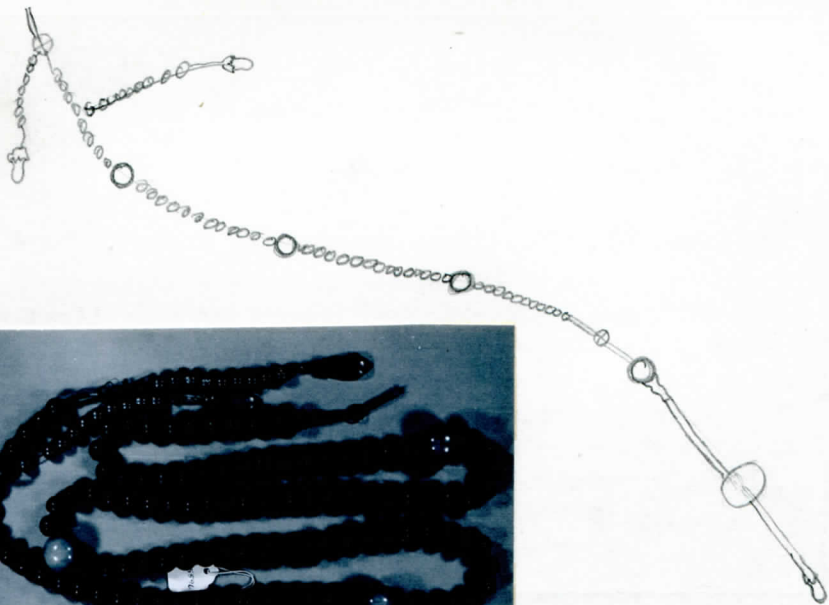
Dimensions: (in cm.)

Neg. No.
neg. #16. P.
311

Max. L - 203.0 Dia. of jade balls - 2.5 Peking, 1936
Dia. of wooden beads - 1.4

Acc. 2806

Collection: Presented by Rev. (Miss) Ellen M. Studley 5 August 1963. Collected by donor circa 1923-1963.



235576