

232562

Pendant

548-10/07

CHINA

Material Amethyst

Dimensions 4.7 cm l.; 3.7 cm. w., 2 cm th. Buttons 1.6 cm,
1.3 cm in diameter

Original No.

Marks

II, 11

Attribution: Ch'ing

Description

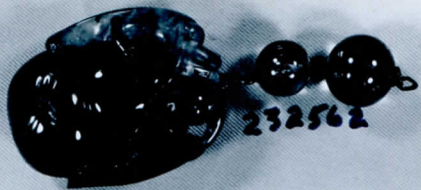
Carved amethyst pendant in the shape of a bi-lobed gourd, with a small fox-like animal in undercut relief, crawling up one side, and a large grape (?) ~~leaf~~ leaf on the other. It is suspended from two spherical buttons of amethyst by a short silver chain

Published

Photograph

NEG. ALB.P. 306

Acc. 2130



232562