

## FIELD MUSEUM OF NATURAL HISTORY.

L26627

Country **China**

54B-10/06

Ind

Locality **PEKING**People **Chinese**Name **Necklace**  
Chain of beads with pendant carved from fishbone colored pink. Openwork design in pendant, of  
flower basket with tassels.

NEG. ALB. P. 318

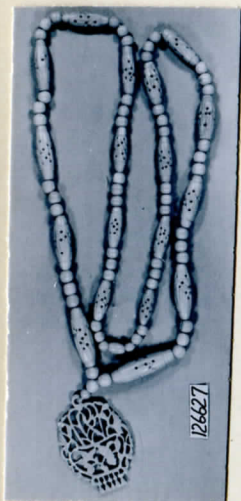
Collection **Capt. Marshall Field Expedition to China, 1923.**

Notes

Acc. 1462

Width Length Height Price

547



126627