

A

FIELD MUSEUM OF NATURAL HISTORY.

Ind

116698

1-2

ENT

Country **China.**

54B-10/07

Locality **Singanfu.**People **Chinese.**

Stock.

Name *Pair of carved pendants of dark-brown
amber, representing ^{a peony and} leaf-ornaments.*

NEG. ALB. P. 306

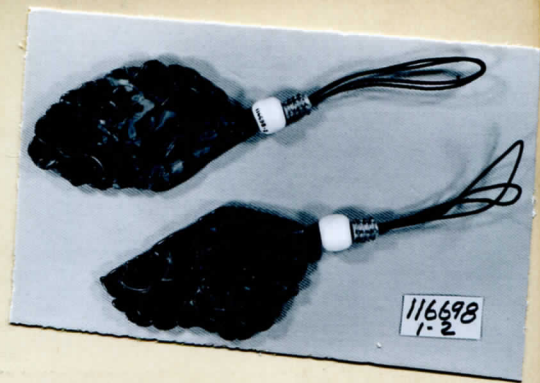
4366/7

Collection **Mrs. T. B. Blackstone Expedition,
Berthold Laufer, Collector 1908=1910.**

Notes

Acc. 1114

Width $\begin{matrix} 1) 3.5 \text{ cm} \\ 2) 3.4 \text{ cm} \end{matrix}$ Length $\begin{matrix} 1) 5.7 \text{ cm} \\ 2) 5.9 \text{ cm} \end{matrix}$ Height $\begin{matrix} 1) 0.4 \text{ cm} \\ 2) 0.5 \text{ cm} \end{matrix}$ Price *0.70 J.*



116698
1-2