

A

CHICAGO NATURAL HISTORY MUSEUM—ETHNOLOGY

34-60

115463

1-2

Provenience: Philippine Islands

ENT

Field No.

People or Culture:

Object: Bolo and sheath

Material: Steel and wood

Description: Thin, narrow, single-edged blade curved upwards. Handle of red narra wood with butt carved into man's head; partly lashed with woven rattan. Figure has animal ears & tusks. Longitudinally gouged sheath of red narra, held by rattan lashings. Handle with slight carvings. Belt of braided abaca fiber.

Dimensions:

(in cm.)

Length 60

Width 6.2

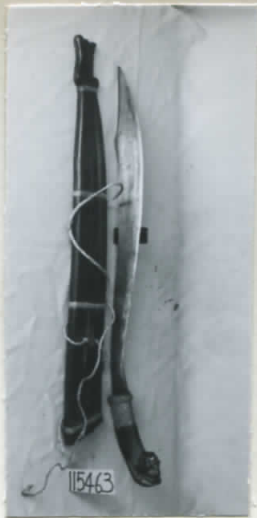
Neg. No.

ALBP. 475

Collection:

Donated by E. J. Grumbecker, 8427 S. Drexel Ave.,
Chicago, Illinois, April 9, 1958.

Acc. 2622



115463