

A

115460

1-2

Field No.

Neg. No.

A.B. P. 492

Acc.

2622

## CHICAGO NATURAL HISTORY MUSEUM—ETHNOLOGY

34-60

Provenience: Mindanao &amp; Sulu Arch., Philippines

People or Culture: Moro

EN7

Object: Dagger and sheath

Material: Steel, and wood

Description: Short, broad, curved & double-edged blade, ornamented on both sides with inscribed Mohammedan motifs. Handle of alternate brass, ivory & horn rings. Butt of hard wood. Sheath of plain, undecorated wood, clamped together by grooved aluminum rings.

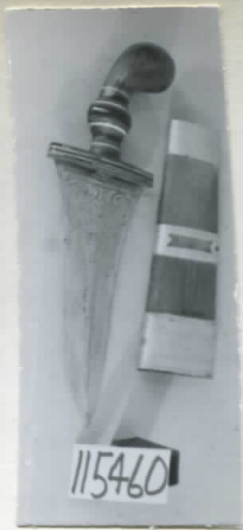
## Dimensions:

(in cm.) Length 24

Width 6.8

## Collection:

Donated by E. J. Grumbecker, 8427 S. Drexel Ave.,  
Chicago, Illinois, April 9, 1958.



115460