

ENT  
254308

A, B

Field No.

J 20

Provenience: CHINA, Peking

People or Culture: Chinese      Period: Late Ch'ing

Object: Pair of headdress ornaments

Material: Silver gilt, kingfisher feathers, glass  
pearls, rose quartz, ruby, jade, glassDescription: Gourd shaped ornaments of silver  
gilt set with kingfisher feathers and  
trimmed with a row of seed pearls. A is  
set with rose quartz and ruby. B with  
rose quartz and jade.

Neg. No.

ALB.P. 306

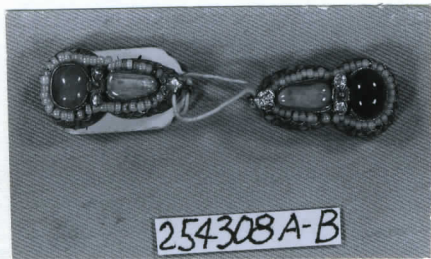
Dimensions:

(in cm.)

A) length: 2.6, width 1.5 (B) length 2.5, width 1.5

Acc. 2786

Collection: C. F. Bieber Collection of Asian Folk and Minor  
Arts, purchased from Miss Caroline Frances Bieber  
15 November 1962



254308 A-B