

FIELD MUSEUM OF NATURAL HISTORY

A
ENT
232715

54B-10/02

Country China
Locality CHEKIANG PROVINCE
People Chinese StockName hairspangle, Flexible gilded metal
inlaid KINGFISHER FEATHERS in 2 TONES^{OF} BLUE.
Two small PERFORATIONS ON EITHER END. BACK-
GROUND BORDERED, SUPERIMPOSED BUTTER-
FLIES, BEETLES AND FLORAL MOTIFS.
19th CENT.Collection MISS MARY I. JONES

Notes

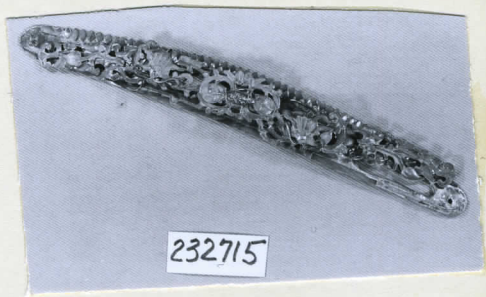
Acc.

2152

Width 1 $\frac{3}{4}$ cm Length 13 $\frac{1}{2}$ cm Height ~~4.5 cm~~ PriceALB
NEG. P. 230,
P. 308



232715



232715