

AGENT

CHICAGO NATURAL HISTORY MUSEUM—ETHNOLOGY

5413-8/11

253414

Provenience: CHINA***Field No.****People or Culture:** ChinesePeriod: 19th cen, acc.
to Carl SchusterBTFE 10
alb**Object:** Scarf or sash**Material:** Silk gauze**Description:** Pale grayish blue silk gauze embroidered in black satin, cross and running stitches with bands of design: scrolls, geometric, floral; designs in lower corners.**Neg. No.**

ALB. P. 336

*Bought in Peking, but the group was mftd. "mostly" in Shantung/Shansi.

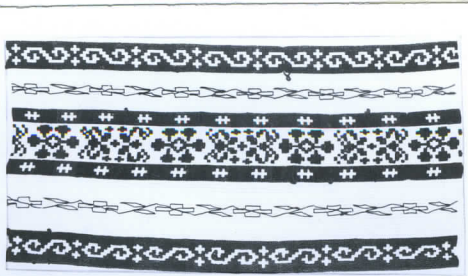
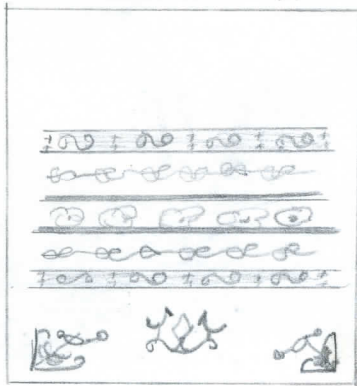
Dimensions:

(in cm.)

27.5 x 31.0 (top of 3 folds.)

Acc. 2786

Collection: C. F. Bieber Collection of Asian Folk and Minor Arts, purchased from Miss Caroline Frances Bieber 15 November 1962



253414